



Steiner

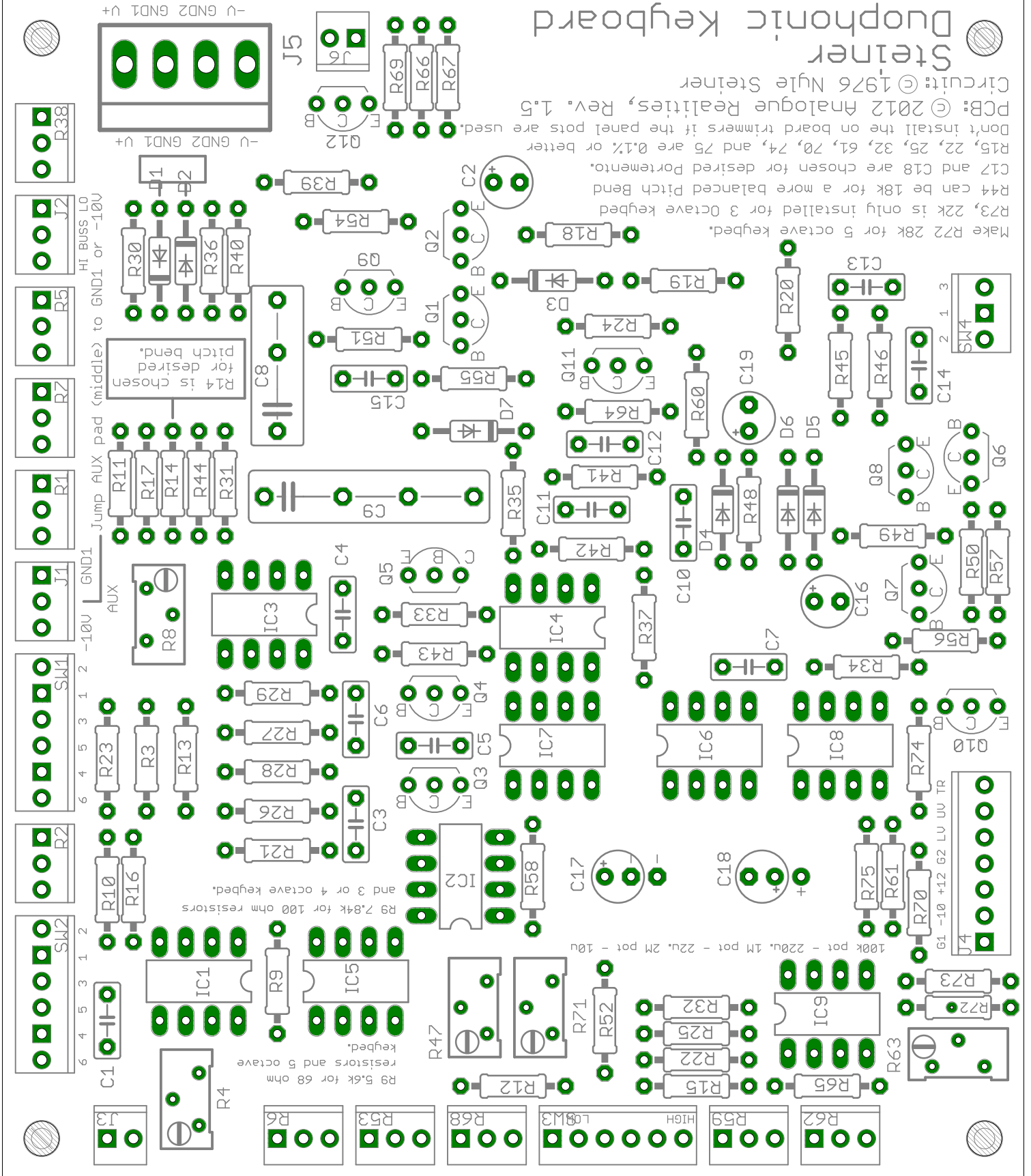
Duophonic Keyboard

Circuit: © 1976 Nyle Steiner

PCB: © 2012 Analogue Realities, Rev. 1.5

Make R22 28k for 5 octave keyboard.
R73, 22k is only installed for 3 octave keyboard.
R44 can be 18k for a more balanced Portamento.
C17 and C18 are chosen for desired Portamento.
R15, 22, 25, 32, 61, 70, 74, and 75 are 0.1% or better.

Don't install the on board trimmers if the panel pots are used.



Jump AUX pad (middle) to GND1 or -10V

R14 is chosen for desired Pitch bend.

R9 5.6k for 68 ohm resistors and 5 octave keyboard.
R9 7.84k for 100 ohm resistors and 3 or 4 octave keyboard.

100k pot - 220u, 1M pot - 22u, 2M pot - 10u

61 -10 +12 G2 LV UV TR